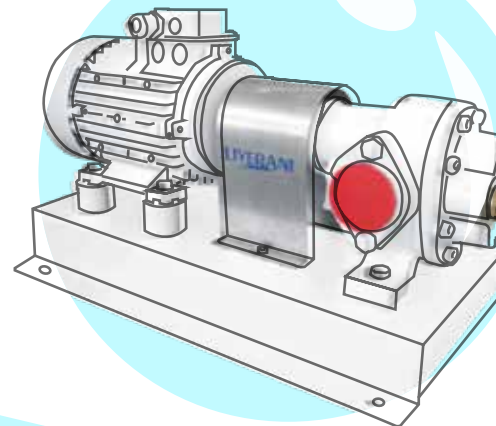


Hardware and technical products



CONTENT

03



Air Pipe Head/ Tank Vent / Check Valve

05



JIS/DIN/ANSI Marine & Industrial Valves

06



Boxcooler / Heat exchanger

07



Searchlights and Wipers

09



Marine and Industrial Pumps

10



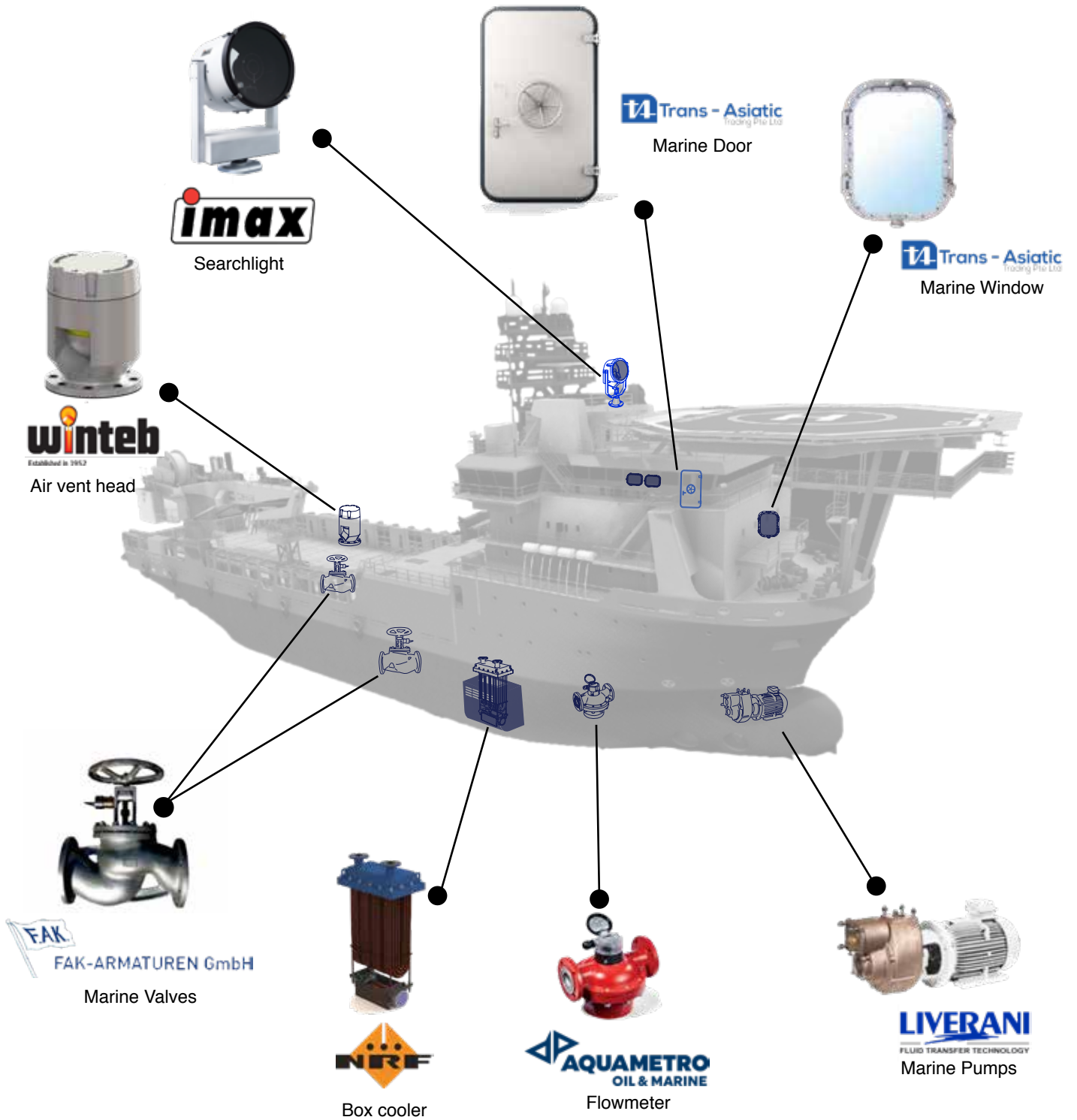
Flowmeter / Diesel Switch / Shaft power meter / Homogenizer / Viscomaster / Fuel monitoring system

11



Marine Outfitting
- Window & Door
- Latches, Manhole
- Marine Ladders

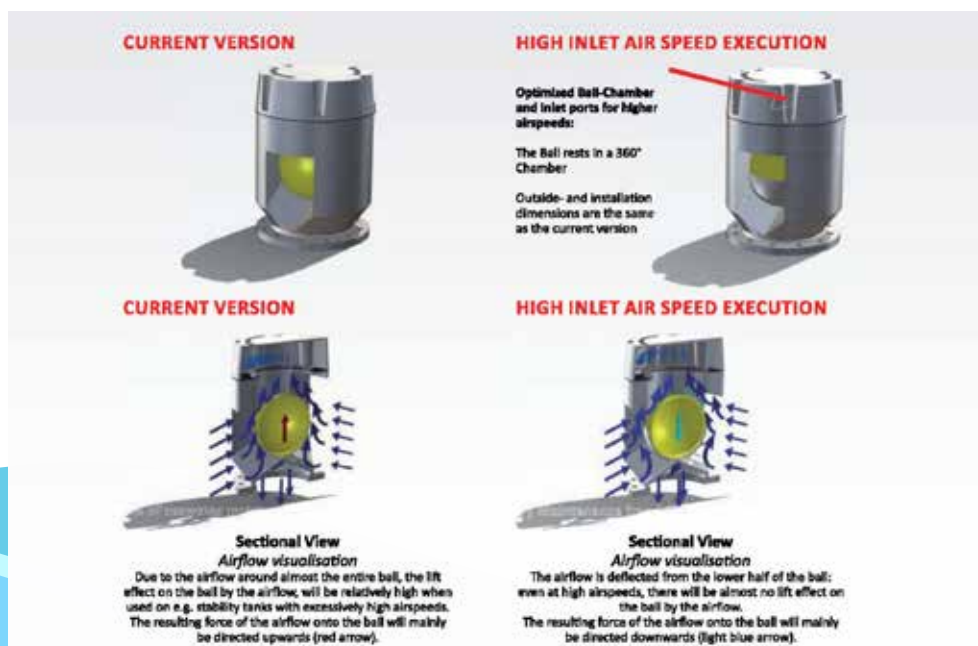
THE VIEW



Founded in 1952, Winteb is the world's largest producer of seawater resistant aluminum (DIN1725) Air Pipe Heads. Winteb has been producing these Air Pipe Heads since 1985, starting with the WIKO5000 series. In the year 2000 Winteb developed the WIN2000 air pipe head series which set the standard in air venting. This series is also produced out of seawater resistant aluminum.

The advantages of seawater resistant aluminium over our competitors who use cast-iron, welded hot dipped iron/steel constructions or stainless steel, is that aluminium (DIN1725) will not corrode and requires no maintenance if fitted according to our fitting Instructions. Furthermore the WIN2000 series has a space and weight saving design that is revolutionary compared to other Air Pipe Heads. Our factory is located in The Netherlands and Trans Asiatic Trading Pte Ltd is our partner and sole distributor for Winteb in Southeast Asia.

Air Pipe Head/Tank Vent Check Valve



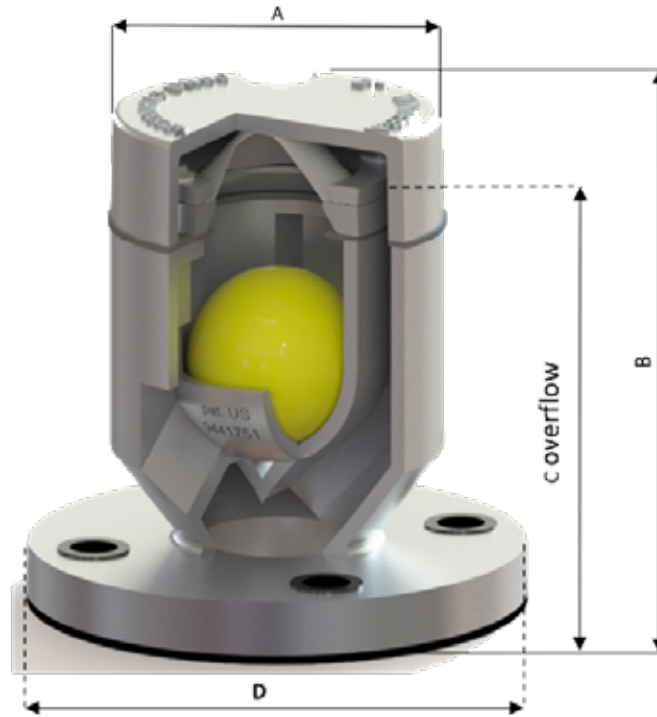
WINTEB PROUDLY PRESENTS:
The High Inlet Air Speed execution
HIAS



Options:

1. Closing device*
2. Screen*
3. Threaded connection (BSP/NPT)
only for aluminium pipes
4. Victaulic connection
5. Small flange connection
6. Powder (epoxy) coating
7. Sounding pipe

*Either option 1 or 2
(Closing device or screen)
- HFD: Winteb strongly advises to use VITON
Gaskets for HFO tanks & Bunker stations
with temperatures exceeding +60°C
- Winteb advises to not use a screen on
Ballast tanks unless required by class



WIN2000 HIAS with screen

Benefits of Winteb air pipe head include:

- Smallest and lightest design in the world
- Corrosion and rust free for life (fitted to fitting instructions)
- Maintenance free
- High inlet air speed
- Approved by all major classification societies

The patented HIAS technology has significantly increased the maximum inlet air speed. Especially designed for stability tanks and anti-heeling tanks.

WIN2000 HIAS is certified as watertight, according to IMO573 regulations

watertight, according to IMO573 regulations

NB: Sizes DN300-DN500 are supplied with lifting eye (not with closing device)



	DN50 (2")	DN65 (2½")	DN80 (3")	DN100 (4")	DN125 (5")	DN150 (6")	DN175 (7")	DN200 (8")	DN250 (10")	DN300 (12")	DN350 (14")	DN400 (16")	DN450 (18")	DN500 (20")
A (mm)	Ø110	Ø130	Ø160	Ø195	Ø233	Ø275	Ø275	Ø338	Ø442	Ø560	Ø645	Ø728	Ø740	Ø887
B ±2.5 (mm)	169	203	235	272	321	380	380	481	595	774	840	945	1110	1148
C Overflow (with screen)(mm)	147	180	194	238	270	323	323	395	495	620	705	779	925	873
D	Flange connection according to any standard													
Ball Diameter(mm)	Ø60	Ø75	Ø90	Ø105	Ø130	Ø155	Ø155	Ø 200	Ø250	Ø325	Ø360	Ø400	Ø480	Ø530
Weight (kg)	2	2.75	4	6.5	9	13	14	20	32	63	88	114	134	180
Flow rate at 0,25 bar(m3/h)*	19	28	46	73	114	182	210	325	469	850	1025	1300	1490	2150
Flow rate at 0,25 bar(m3/h)**	18	25	42	68	101	169	195	279	443	805	925	1175	1375	1925
Max. inlet air speed (m/s)	17	17,5	38	58	59	42	42	27	15	39	36	27	34	29
Inlet air flow at max. inlet air speed (m3/h)	135	209	612	1620	2590	2700	2700	3060	2700	9900	12240	12060	19080	20880

** Please note that these values correspond with the WIN2000 HIAS *without screen*, flowrate is with water being pumped through the air pipe head.

*** Please note that these values correspond with the WIN2000 HIAS *with screen mesh 18*, flowrate is with water being pumped through the air pipe head.



The Hamburg-based company FAK-ARMATUREN GmbH is an international active company with a flexible team all round about valves. Our founder Fritz A. Kähler has been active in this industry since 1966 and is well known in shipbuilding industry. With 2 different stocks in Sweden and in Germany FAK-ARMATUREN GmbH has access now to around 25,000 various valve products and accessories. We now also supply in different Standards as well as DIN and JIS and ANSI.

JIS/DIN/ANSI Marine & Industrial Valves



Globe Valves



Gate Valves



Cocks/Ball/plug Valves



Butterfly Valves



Filter



Tank Level Indicators



Safety Valves



Pressure reducing Valves



Gauges/ related equipment



Since 1927 NRF is a leading manufacturer and supplier of cooling products for the automotive market, industrial, railway and marine sector. NRF is known for the production of high quality radiators, but also produces and supplies a large range of other engine cooling and air conditioning products.

In 1959 NRF invented the boxcooler, when they were asked to find a simple solution in order to keep the engines of river boats, which were cooled with surface water, free of fouling. Due to the success of this product, more and more vessels changed over to this type of cooling. Today, NRF is market leader in this field and beside the box cooler, NRF supplies shell and tube coolers, plate heat exchangers, and fin/fan coolers all over the world. NRF is your partner for total cooling solution.

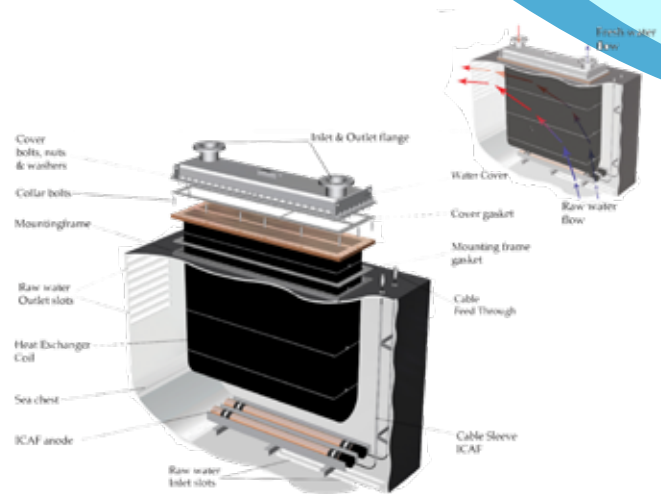
Boxcooler

For use in sweet water:

- Aluminium brass tubes. Boxcooler will be delivered with additional 4 Sink anodes for sea chest protection.

For use in salt & brackish water:

- Aluminium brass tubes on raw water side coated with 0,10-0, 15mm Phenolic coating. The coating is a high electrical resistant to prevent galvanic corrosion of the sea chest.
- ICAF (Impress Current Anti Fouling)



Other Cooler Range

Shell & Tube:

- Standard cooling range from 1 to 1000kw
- Oil/water & water/water application
- Bronze covers for seawater, cast iron for sweet water
- All naval classification approved

PHE:

- Plate heat exchanges in SS304, 316 & titanium clad. 18 different types and connections from 15mm till 500mm
- Covering a flow of 50 L /hour - 2000ml / hours





IMAX trading and engineering is a manufacturer of marine Searchlights and wipers. The design of IMAX Searchlights is based on many years of experience and extensive research in the field of professional Marine lighting. Every part of the IMAX Searchlight is of course protected against the environmental circumstances at sea.

IMAX mirror/reflectors maintain their superior brilliance during many years. Based in Holland, IMAX Searchlights guarantees excellence in quality and performance. Carefully selected materials are used to ensure maximum performance, low maintenance and a long trouble free life.

IMAX Searchlights

- Stainless Steel Construction
- Superb Optics
- Powerful Longrange Beam
- Electrical Remote Control
- Low Maintenance
- Durability
- Halogen, LED, Xenon, Metalarc
- All marine grade materials and fixings
- Parabolic silvered glass mirror/reflector
- Epoxy powder coatings
- Remote focus facility



IM290C



IM300RC



IM345C



IM350RC



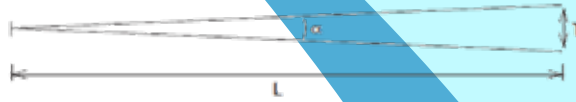
IM490C



IM490RC



IM490RCX



Searchlight	Lamp power	Source	Current [V]	PBCP(measured) lum x1000	Range L [meter]	Divergence a	Illuminated area at target 1 lux
IM290C/D	250W	Halogen	24V	1426	1194	4	Ø 90 m
IM290C/D	650W	Halogen	230V	685	920	9	Ø 140 m
IM290C/D	80W	LED	24V	1687	1350	5	Ø 100 m
IM300RC	250W	Halogen	24V	1426	1194	4	Ø 90 m
IM300RC	650W	Halogen	230V	685	920	9	Ø 140 m
IM300RC	80W	LED	24V	1687	1350	5	Ø 100 m
IM345C/D	1000W	Halogen	230V	1088	1043	6°	Ø 110 m
IM345C/D	120W	LED	230V	1850	1550	6°	Ø 160 m
IM350RC	1000W	Halogen	230V	1088	1043	6°	Ø 110 m
IM350RC	120W	LED	230V	1850	1550	6°	Ø 160 m
IM400CX	1000W	Xenon	230V	40x10 ⁶	6700	5	Ø 180 m
IM400CE	850W	Metalarc	230V	60x10 ⁶	8450	5	Ø 150 m
IM400RCX	1000W	Xenon	230V	40x10 ⁶	6700	5	Ø 180 m
IM400RCE	850W	Metalarc	230V	60x10 ⁶	8450	5	Ø 150 m
IM490C	2000W	Halogen	230V	5600	2366	8°	Ø 140 m
IM490C	350W	LED	230V	5300	2300	8°	Ø 140 m
IM490RC	2000W	Halogen	230V	5600	2366	8°	Ø 140 m
IM490RC	350W	LED	230V	5300	2300	8°	Ø 140 m
IM490CX	2000W	Xenon	230V	87 x 10 ⁶	9200	3-8°	Ø 180 m
IM490CX	3000W	Xenon	230V	91 x 10 ⁶	11500	3-8°	Ø 180 m
IM490RCX	2000W	Xenon	230V	87 x 10 ⁶	9200	3-8°	Ø 180 m
IM490RCX	3000W	Xenon	230V	91 x 10 ⁶	11500	3-8°	Ø 180 m



IMAX Marine Straight Line Wipers

Imax Marine Straight Line Wipers Imax has developed a straight line wiper series for all offshore vessels. It is a robust and solid version capable sustaining all kinds of weather .The cover is made from stainless steel and with the Imax white powder coated finishing.

The design is as compact as possible and all wipers are operated by a master/slave control panel. Simple construction coupled with the use of only the highest quality materials guarantee the reliability and trouble- free maintenance of the wiper system.

LIVERANI

FLUID TRANSFER TECHNOLOGY

Liverani company, born during the '50s, manufactures and exports all over the world its pumps and presses. All its products are produced according to the CE standards and the high quality of raw materials and technology allow excellent performances together with a simple use and maintenance of the pumps. The wide range of products, the materials and the numerous pump versions allow a very wide range of applications.

Centrifugal selfpriming electric pumps

Centrifugal selfpriming electric pumps made of bronze (slow priming). These pumps are widely used to empty bilges, to supply anti-fire equipment, to wash chains and for diesel oil transfer. The impeller shape allows the transferring of liquids with small solid parts in suspension



AML 65



AML 50 (Diesel motor)

Selfpriming and reversible electric pumps

Selfpriming volumetric monobloc gear electric pumps suitable for transferring of viscous liquids but without any solid parts in suspension like lubricating oil, fuel oil and diesel oil. For viscosities higher than 150-200 CP please ask for 900 RPM motor.



Gear base



EP 70

Multi-stage high pressure selfpriming electric pumps

Multi-stage high pressure selfpriming electric pumps made of bronze fitted with radial impellers. These electric pumps are widely used to empty bilges, to supply anti-fire equipment, to wash chains and for diesel-oil transfer.



ABRM(AC)

Centrifugal electric pumps

Centrifugal not selfpriming electric pumps made of bronze. These pumps are widely used in the nautical sector for liquid circulation, air conditioning, cooling.



LCB

Single screw pumps

Single screw pumps with bronze pump body, widely used in the nautical sector on boats for transfer and emptying waste tanks, toilet sewage, heavy liquids also with solid parts in suspension, viscous and oily liquids, like lubricating oils, exhausted oils, fuel oil, diesel oil, etc.



MO-B

Single, horizontal or vertical pressure booster sets

Pressure booster sets, widely used in the nautical sector where they grant a suitable and constant water pressure for all on-board appliances such as: showers, washbasins, toilets, etc.



GDO ECPS-IJ



GDV-IJ

Helicoidal blower

Air suction and ventilation in closed rooms (toilets, kitchen, engine room and other compartments). Flux to specify on order: A flux (ventilator) P flux (extractor).



HBL

Since 1928, Aquametro have been among the leading manufacturers and suppliers of volumetric meters for diesel fuel, measurement and optimization solutions for all kinds of oil and diesel-powered vehicles and ships, generator sets, diesel electric locomotives and marine shipping.

Our range consists of more than 100 different fuel meters and marine systems which have been developed specially for ships, transport vehicles and other heavy machinery in the shipping industry. We are also considered experts in viscosity measurement/control, performance measurement, monitoring and management systems for fuel performance and fuel switching units (HFO to MDO and vice versa).

Flowmeters Contoil

Fuel oil meters DN 15 - 50

Features:

- State-of-the-art design
- Electronic counter, mass flow, volume flow indication, multiple output signals
- Integrated temperature sensor
- No straight inlets or outlets required
- Independent of viscosity and temperature
- High vibration resistance
- Optional: metrological type approval
- Automatic medium switch based on temperature



VZFA II CE and VZOA CE

Fuel oil meters DN 4 - 8 (12)

Features:

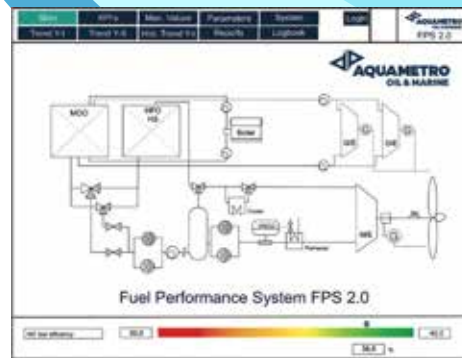
- Supports most used models of vehicles
- Proved and tested system
- Easy and accurate reading of engine fuel consumption
- No extra maintenance necessary Tamper-proof measurement



Fuel performance system

Features:

- Web based visualization and reporting - Data collection
- Trend curves
- KPI analysis
- Plausibility check
- Monitoring and reporting
- Fuel transparency and optimisation - Customizable monitoring systems



Diesel switch

Features:

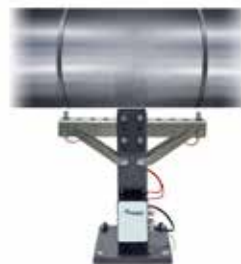
- Simplest and universal design / turn key product
- Automatic fuel change over or permanently controlled fuel blending of different types of fuel oil
- Full DNVGL type approval certificate Saving fuel costs
- Control of rise of fuel temperature on engine in let
- Full data visualization and storage
- Additional GPS-position and logging available



Shaft power meter

Features:

- RPM, torque and power signals
- Reliable data
- Fuel / propulsion efficiency
- Key component for fuel performance system FPS 2.0
- PLC based system with web based visualization via Ethernet
- Data storage on SD card Easy installation Maintenance free



Homogenizer

Features:

- Continuous homogenizing by shearing of asphaltene clusters
- Pure mechanical & no chemical treatment
- Continuous generation of water in fuel emulsion
- Sludge treatment on board
- Fuel treatment in fuel circulating system reduce sludge of fuel incompatibility



Viscomaster

Features:

- On-line real-time kinematic viscosity Marine approved
- Minimum maintenanc
- High accuracy
- Simple to use



Trans Asiatic Trading Pte Ltd, through a joint venture, produces and distributes aluminum and steel outfitting items for marine application. Our products are made with the highest quality and come with relevant marine certificates. We have completed many projects for different clients for the years and have an established reputation in the region .

As a well-established marine engineering company, we specialize in design and fabrication of marine grade windows, doors, hatches, ladders and other types of interior accommodation system in ship and passenger vessel like gangway ladder, ceiling panels, pre-fabricated sanitary modules and seat modules.

Please send us an inquiry for more information.

Marine Door



Quick Closing Type



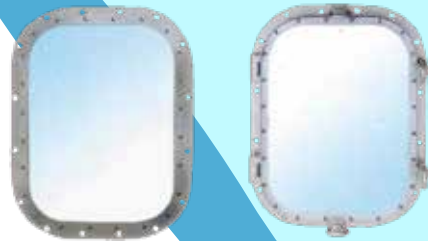
Dogclip Type

- Standard: ISO, JIS
- Material: Aluminium alloy or Stainless Steel & Mild Steel
- Size: Custom made to customer's requirement
- Options: Aluminium Porthole
- Marine Certificate approval
- watertight / weathertight / spraytight
- Operation: handwheel / lever / dogclip

Marine Window

Bolted / Welded Type

- Standard: ISO, JIS
- Material: Aluminium alloy or Brass & Steel
- Glass: Toughened, Double glazed, Laminated, etc
- Size: Custom made to customer's requirement
- Marine Certificate approval



Side Scuttle

- Standard: ISO, JIS
- Material: Aluminium alloy or Brass & Steel
- Glass: Toughened, Double glazed, Laminated, etc
- Size: Custom made to customer's requirement



Marine Hatches/manhole

Quick Closing / Dogclip type

- Standard: ISO, JIS
- Material: Aluminium alloy or Stainless Steel & Mild Steel
- Size: Custom made to customer's requirement
- Finishing: Sand blasted & primer
- Option fittings upon client request: Counter weight / Spring loaded



Marine ladder

- Standard: ISO, JIS
- Material: Aluminium alloy
- Size: Custom made to customer's requirement



Products

- 💧 Air pipe head/Tank vent check valve
- 💧 Marine valves
- 💧 Boxcooler/Heat exchanger
- 💧 Searchlight
- 💧 Marine wipers
- 💧 Pumps/Pressure booster sets/Blowers
- 💧 Flowmeter
- 💧 Remote monitoring system (Fuel)
- 💧 Marine door/windows

www.trans-asiatic.com

Trans-Asiatic Trading Pte Ltd

Blk 1 Defu Lane 10, #04-567
Singapore 539182

E: trasia@singnet.com.sg
T: (65) 6282 5376 & (65) 6280 2679
F: (65) 6284 6063