

NorSap MX System

A modular based platform which results in a variety of combination possibilities.

- System is based on interchangeable modules that can be combined to suit your requirements.
- Thoroughly tested mechanical solutions.
- Easy access to installed equipment.
- Developed to fulfil the requirements of maritime standards of operator chairs. Focusing on ergonomics, line of sight, security, function and mechanical durability.
- Electrical and manual adjustment of the seat and other parts affecting the operator. Individual adjustment to meet the strongest demands of ergonomics for the operator.

Options

- Electrically or manually turn, or no turn at all.
- Electrically rise and lower of the chairs column, or fixed height.
- Electrically or manually rise and lower of foot rest, or no foot rest.
- Standard, glass infused or a wider foot rest plate, with or without foot switches.
- Electrically adjustment of the seat and other parts affected by the operator.
- Custom built frame casing and armrest.
- Additional monitor, keyboard or customer specified instrument holders.
- Integrated control panel for adjusting the chairs electrical functions.

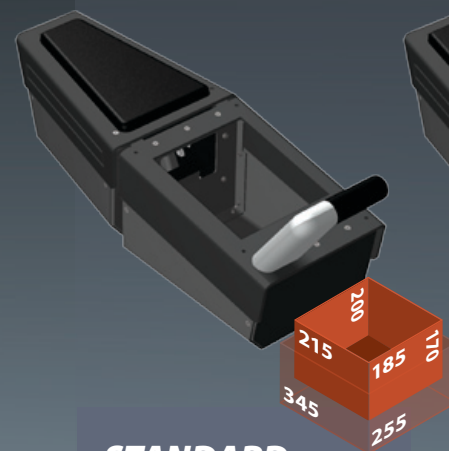


Modular arm rests

The armrests can either be based on previously developed solutions by NorSap or your own specified design.

The armrests below are some of the solutions already developed. Only the cover lid needs modification to suit your equipment. The lid is manufactured in 3 mm aluminum. Cut-outs for dials, buttons, joystick and thrusters are easily done.

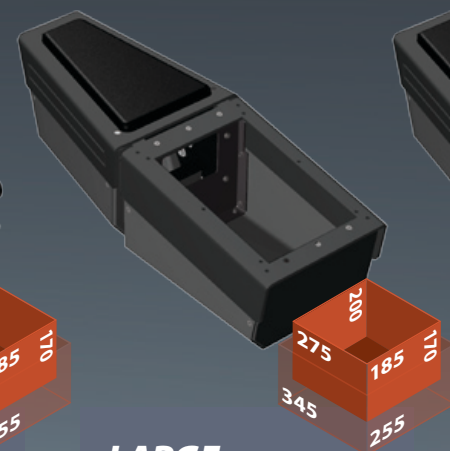
The back part of the modular armrests contains also a fold out note pad table combined with a cup holder. For more alternatives for the back part, please visit norsap.com. The front parts of the modular arm rests are angle adjustable - combined with the eight way adjustable seat this ensures an optimal ergonomically working environment.



STANDARD+

DEL-3747H - Right
DEL-3747V - Left

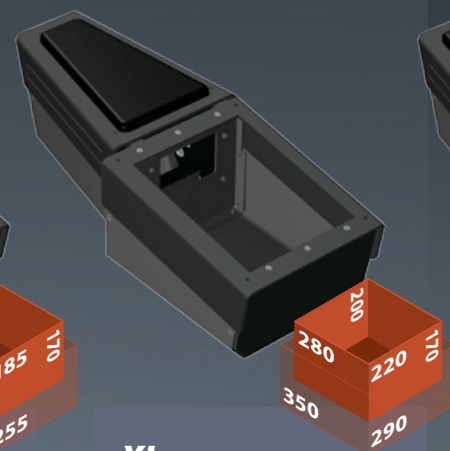
Has a practical handle in front to ensure easy chair declining and works as protection of controlling equipment.



LARGE

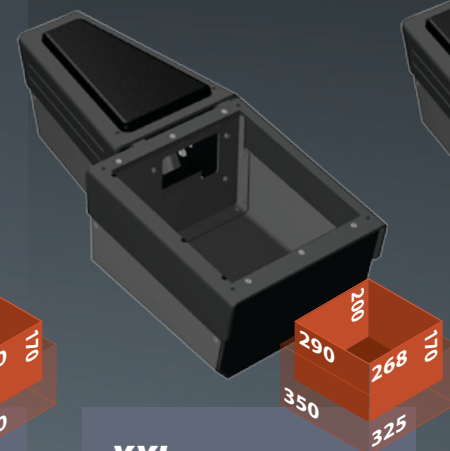
DEL-3745H - Right
DEL-3745V - Left

Same casing as the STANDARD+ but without the handle.



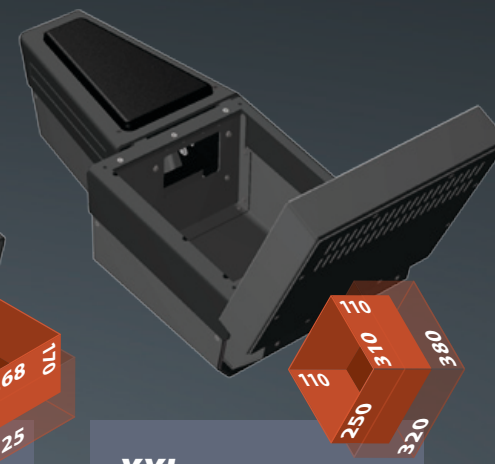
XL

DEL-3828 - Right
DEL-3829 - Left



XXL

DEL-3746H - Right
DEL-3746V - Left



XXL+

DEL-3746H + DEL-3844
DEL-3746V + DEL-3844

Armrest casing as the XXL, but has an additional monitor casing mounted in front. Monitor not supplied.

