

# STREAMO KARAVEL

DESIGN LED VINYL FLOORING FOR SHIP INTERIORS

**Gerflor**<sup>®</sup>  
theflooringroup

**t4** **Trans - Asiatic**  
Trading Pte Ltd

[www.trans-asiatic.com](http://www.trans-asiatic.com)  
[trasia@singnet.com.sg](mailto:trasia@singnet.com.sg)

Phone : +65 6282 5376  
Fax : +65 6284 6063



# They trust Streamo...

## EUROPE

- Anek Lines
- Arctech Helsinki Shipyard
- Balenciaga
- Blohm + Voss
- Bourbon
- Brittany Ferries
- Caledonian Maritime Assets
- CMA ships
- CRN
- Damen
- DCNS
- Enesco
- Feadship
- Flensburger Schiffbau
- Fincantieri
- Hapag-Lloyd Cruises
- Hellenic Fast Ferries
- Louis Cruise
- Meyer Turku
- Meyer Werft
- MSC Cruises
- Murueta
- Nordic Yards
- OCEA
- Oldendorff
- Orange Marine
- P&O Cruises
- Palumbo
- Phoenix Reisen
- Piriou
- Reederei Adler-Schiffe
- Reederei AG Ems
- Reederei Leonhardt & Blumberg
- Reederei Norden-Frisia
- Remontowa
- Rosetti
- Russian United Shipbuilding Corporation
- Salamis shipyards
- Scheepswerf gebroeders Kooiman
- Shipyard Royal van Lent
- SNCM
- Sturier
- STX
- Tallink
- Technip
- Total
- TUI Cruises
- Uljanik shipyard
- Ulstein
- Westcon
- Zamakona...

## AFRICA AND MIDDLE EAST

- Aksoy shipyard
- Besiktas Shipyard
- Celiktrans Shipyard
- Cemre Shipyard
- CNOI Mauritius
- Grandweld Shipyard
- Selah Shipyard
- Sefine Shipyard
- Uzmar Shipyard
- Yachtley...

## NORTH AND SOUTH AMERICA

- Baru Offshore
- BC Ferries
- Carnival Cruise Lines
- Celebration Cruise Line
- Disney Cruise Line
- ETP Engenharia
- Holland America Line
- Noble Energy
- Norwegian Cruise Line
- Oro Negro
- Petrobras
- Princess Cruises
- Royal Caribbean International
- Société des Traversiers du Québec
- Silversea
- Ultramar
- Viking Cruises...

## ASIA AND OCEANIA

- APSI
- China Coast Guard
- China Fishery Bureau
- China Marine Surveillance
- China MSA
- Chongqing Changhang Dongfeng Shipbuilding
- COSCO (Dalian) Shipyard
- COSL
- Crystal Cruises
- CSIC
- CSSC Huangpu Wenchong Shipbuilding
- Daewoo Shipbuilding and Marine Engineering
- Dalian Shipbuilding Industry Company
- Dayang shipbuilding
- Ehime KaiRikuun
- Ezra-Triyard
- FTS Derricks
- Hyundai Heavy Industries
- Hyundai Mipo Dockyard
- Hyundai Samho Heavy Industries
- IHI Corporation - Aichi Works
- Imabari Shipbuilding Group
- Incat
- Japan Marine United Corporation
- Jurong Shipyard
- Kawasaki Heavy Industries
- Kawasaki Kisen Kaisha
- Keppel Fels
- Keppel Shipyard
- Marubeni
- Nantong COSCO KHI Ship Engineering
- National Antiquities Authority
- Otto Marine
- PPL Shipyard
- PT Batamec
- PT Jaya Shipyard
- Samsung Heavy Industries
- SEAS
- ShanHaiGuan Shipping Industry
- Shouei Kisen
- Star Cruise
- Tianjin Xingang Shipbuilding Heavy Industry
- Tokyo Gas
- Wisdom Marine Lines
- Wuchang Shipbuilding Heavy Industry
- ZheJiang Shipbuilding...

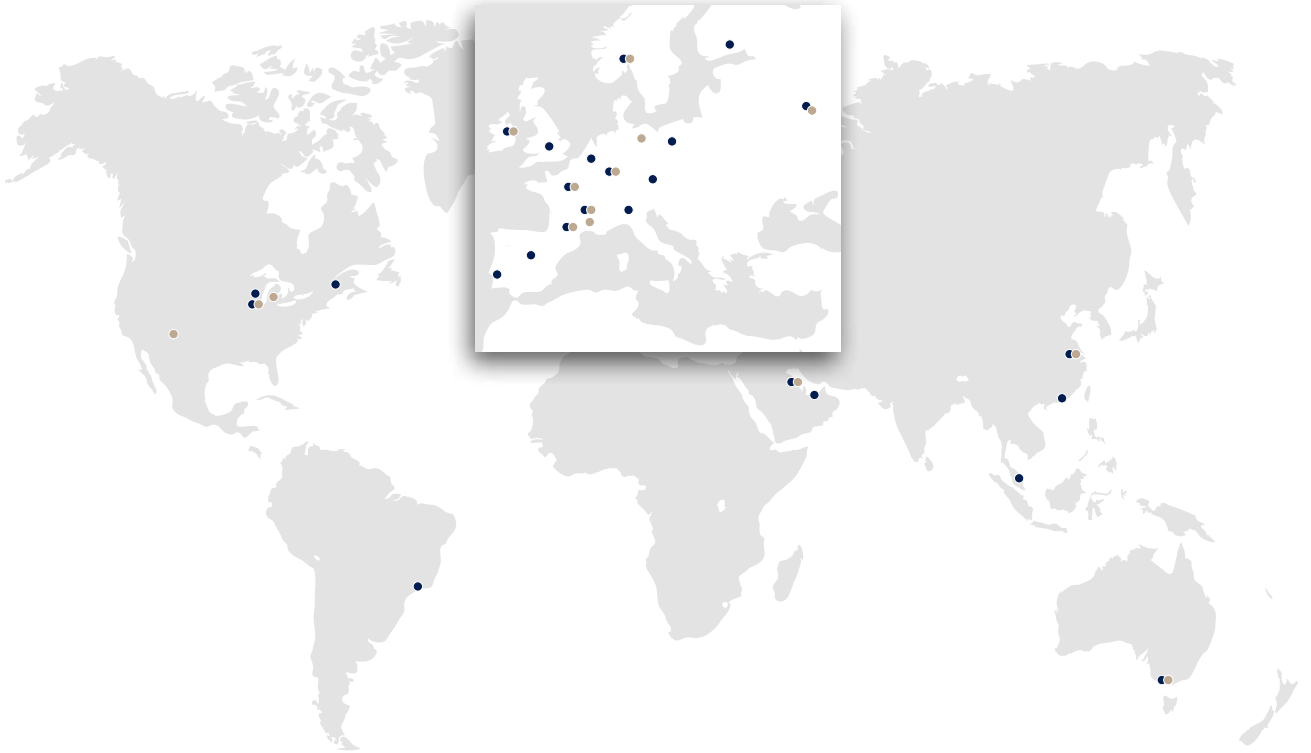
# ABOUT GERFLOR

## WORLDWIDE PRESENCE

and proximity to our customers through:

**25** subsidiaries and a broad network of partner distributors  
**15** manufacturing plants and logistic hubs

- sales offices
- manufacturing plants and logistic hubs



**100** **MILLION**  
people daily live on a Gerflor Residential flooring.



**6** **MILLION**  
children daily enjoy the benefits Taraflex™ Sports flooring.



**500** **MILLION**  
patients healed everyday on Gerflor floors for Healthcare.



**200**

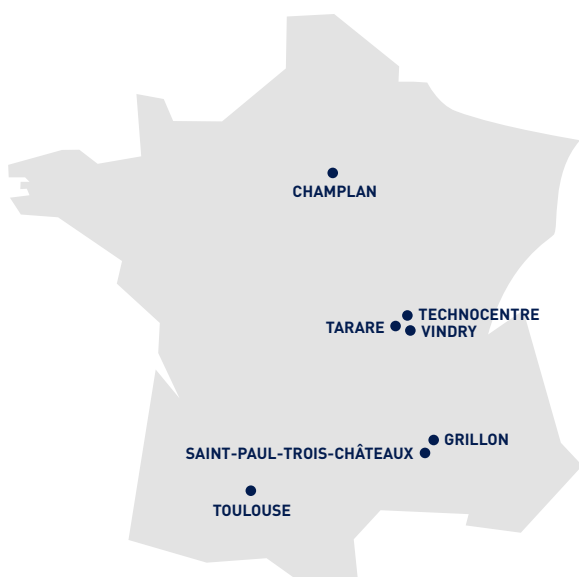
OUR VALUES

Audacity

Respect

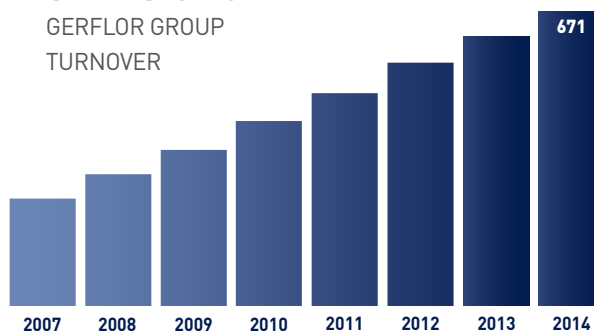
## IN FRANCE...

All began in France...  
The heart of Gerflor's innovation



## SALES GROWTH

GERFLOR GROUP  
TURNOVER



## KEY FIGURES 2014

**SALES 671** MILLION EUROS

**STAFF 2 750** EMPLOYEES

**10**

**WORLD CLASS**

competition games played everyday on a Taraflex™ Sports floor.



...GERFLOR EVERYDAY

**000**

**SQM**

Gerflor floors and wall protections installed everyday.

**600**

**MILLION**

people daily travel on a Gerflor Transport flooring

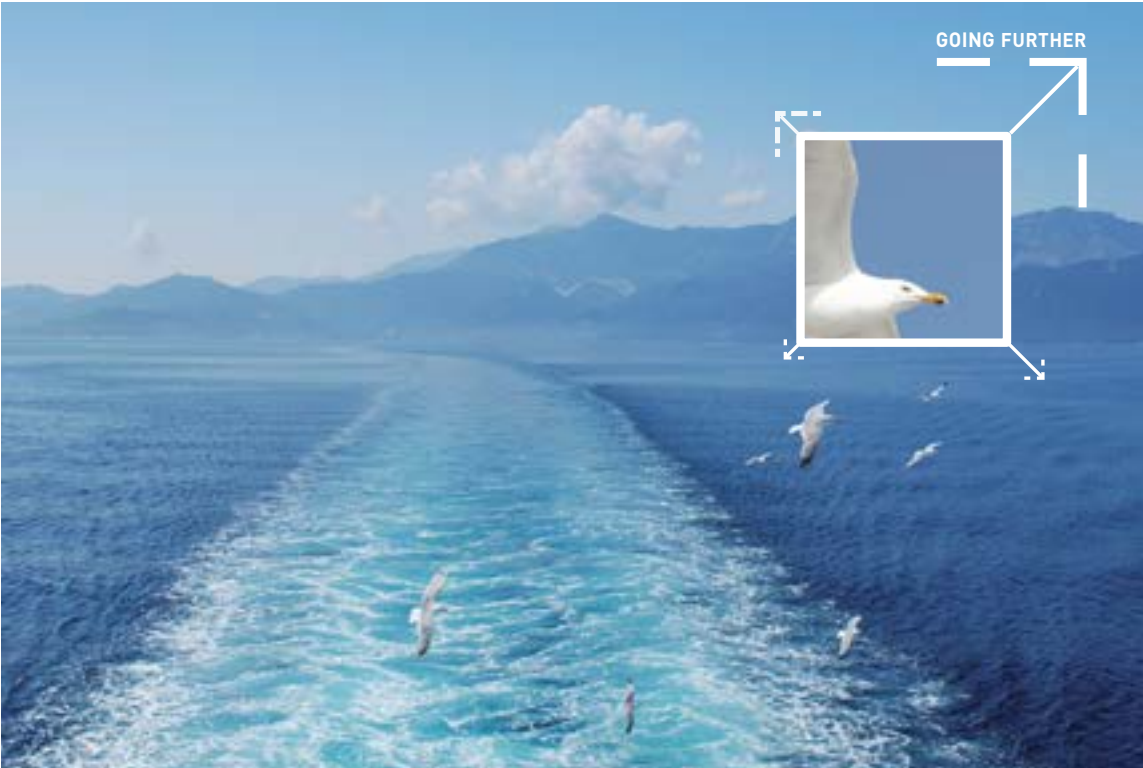


Conviviality

Sense of partnership

# ECO-RESPONSIBLE SOLUTIONS

---



Health & safety

## Selected and responsible raw materials

**NO** heavy metal, **NO** solvent. **NO** formaldehyde, **NO** substance potentially subject to REACH\* restrictions.

## Inventory of Hazardous Materials

Streamo Kavel complies with the guidelines for development of Inventory of Hazardous Materials Resolution MEPC 197 (62).



## 100% recyclable materials



ISO 14001

## ISO 14001 certified

---

\*REACH is the European regulation on registering, assessing and authorising chemical products within the European Union.



# STREAMO

## BY GERFLOR

Streamo is Gerflor's approved product range dedicated to the marine market, fulfilling the fundamental requirements of the International Maritime Organisation (IMO).

New Streamo Karavel Luxury Vinyl Tiles have been inspired by nature and combine wood and stone patterns. Its 4 trends offer comprehensive color choices which are intended to address customers' requests and needs:

The **Contemporary line** with modern patterns, **Vintage style** for traditional ambiance, **Classic wood** patterns as a symbol of elegance and **Mineral tiles** influenced by Nature's origins.

Besides its well known reputation for high technical performances in terms of traffic and slip resistance, ease of installation and maintenance, Streamo Karavel has strengthened its design-led collection image, focusing on aesthetics with authentic and deep embossing for a more natural look.

Streamo Karavel stands out as the ideal solution for new builds as well as refurbishments. To be sure, customers will find inspiration in this newly revamped collection.

### OUR MISSION STATEMENT:

- To create, manufacture and market design-led and technical solutions in terms of floorings and interior finishes.
- To make Gerflor a unique and valuable partner for our customers, offering a complete flooring solution (from floor to wall)
- To be committed to prompt and reliable services

## WORLDWIDE PRESENCE OF MARINE EXPERTS



COLLECTION

# STREAMO

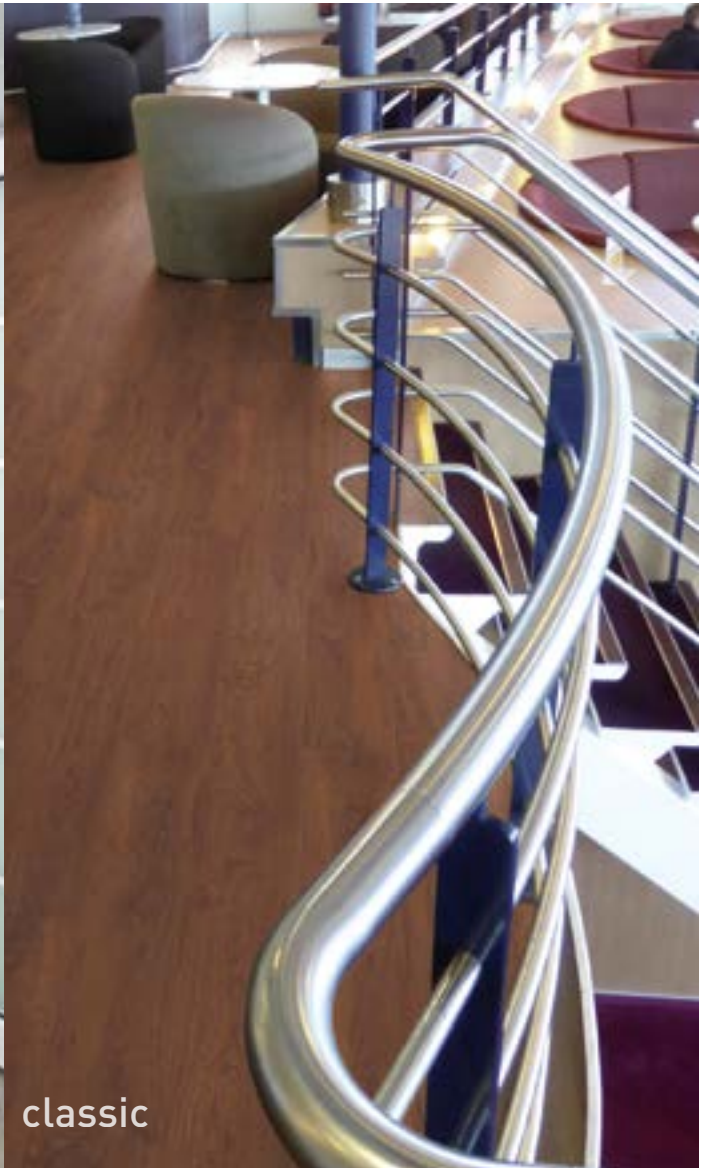


DECORATIVE FLOORINGS

# KARAVEL



contemporary



classic

Photo : Miina Alajärvi - Architect : Marjut Nousiainen

FOR SHIP INTERIORS



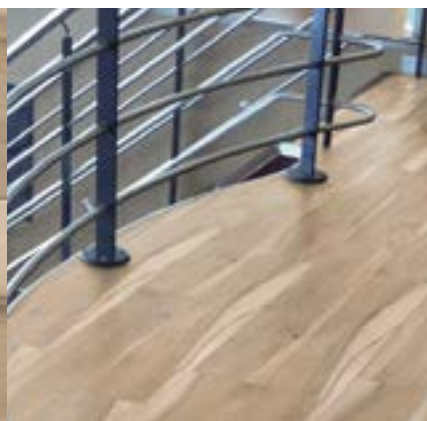
# CONTEMPORARY

Dive into the modern lifestyle  
with soft and natural colors

*natural*



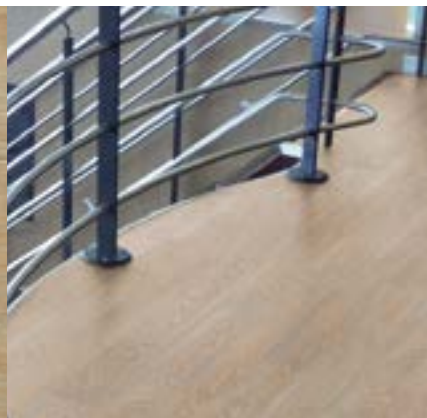
0533 Baxter



152 x 914 mm



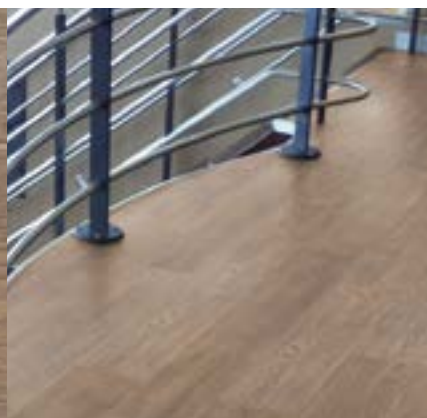
0324 Silversands



152 x 914 mm



0547 Duchess

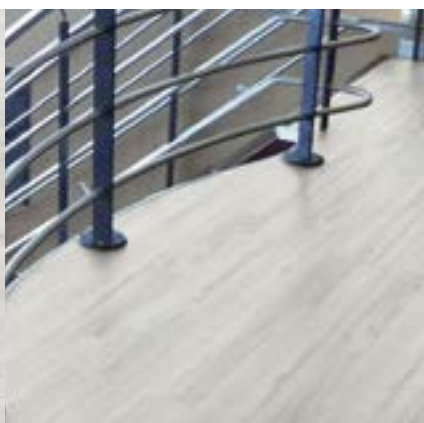


152 x 914 mm



0707 White teak

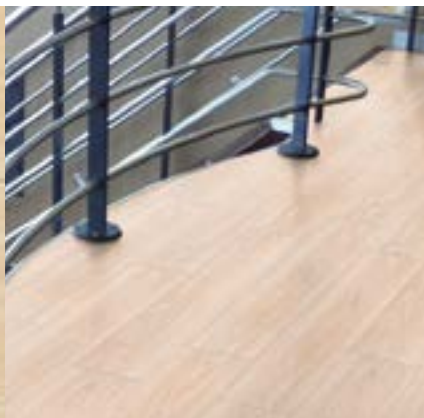
**G** NARROW PLANK



102 x 914 mm



0269 Birch

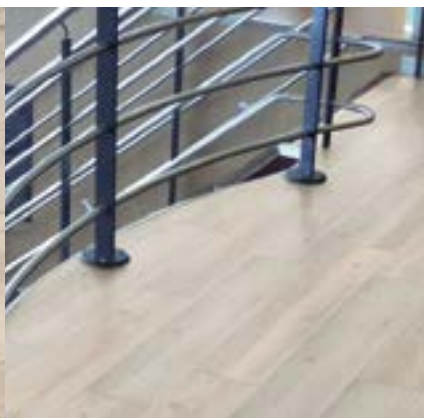


152 x 914 mm



0448 Malua bay

**G** LONG EFFECT



184 x 1219 mm

# VINTAGE

Authentic values, distinctive designs,  
staying close to the Nature

*authentic*



0455 Long board



184 x 1219 mm



0369 Drift wood



152 x 914 mm



0364 Barnwood



152 x 914 mm





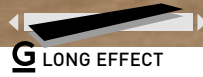
0357 Portobello



152 x 914 mm



0577 Albion



184 x 1219 mm



0360 Deep Forest



152 x 914 mm



0706 Old Teak



102 x 914 mm

# CLASSIC

Keep distinctive elegance  
with warm and versatile colors  
for a comfortable atmosphere

*timeless*



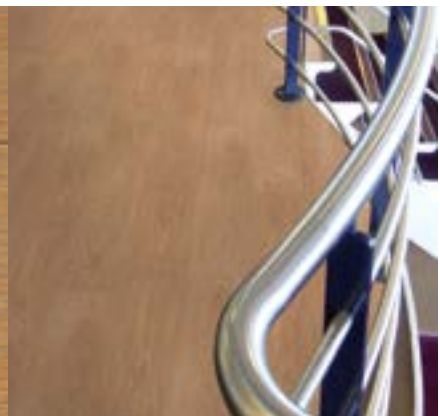
0259 Natural Oak



152 x 914 mm



0258 Muir Oak



152 x 914 mm



0262 Elm



152 x 914 mm





0339 American Oak

152 x 914 mm



0265 Walnut

152 x 914 mm



0705 Teak

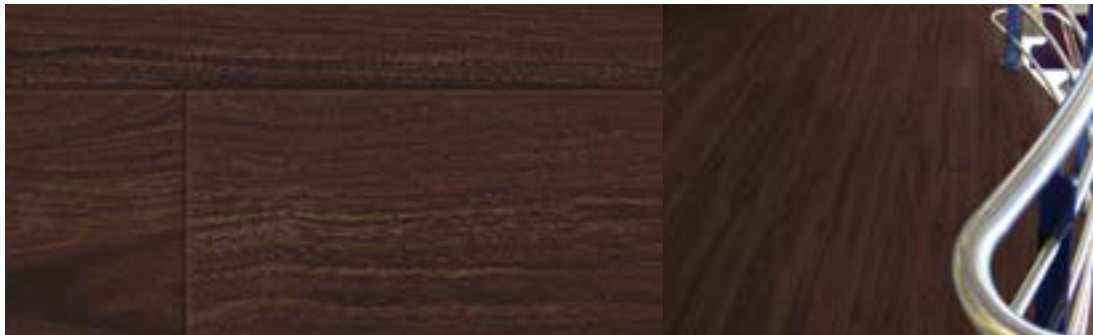
**G** NARROW PLANK

102 x 914 mm



0362 Mystic River

152 x 914 mm



0541 Flamingo

152 x 914 mm

# MINERAL

Stone designs inspired  
by Nature's origins and  
raw beauty



0528 Flagstaff

457 x 457 mm



0475 Bolero

457 x 457 mm



0518 Mugello

457 x 457 mm



0512 Lewis Town

457 x 457 mm

*origins*



## DECORATIVE STRIP

	0330 Silver	914 x 4 mm
	0331 Black	914 x 4 mm / 914 x 6 mm
	0332 Light Concrete	914 x 4 mm
	0333 Dark Concrete	914 x 4 mm
	0334 Brown Concrete	914 x 4 mm
	0335 White Concrete	914 x 4 mm

**PACKAGING** 4 mm: 80 strips / box  
6 mm: 50 strips / box

*The images of floorcoverings in this brochure have been reproduced as faithfully as printing technology permits. Color shade difference may occur. Please ask samples for color approval.*



# FINISHES & SERVICES

## LOGOS INLAYS

- 3 standard drawings available in different colour variations
- Custom logos on demand



Classic



Style



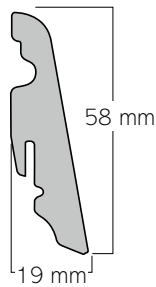
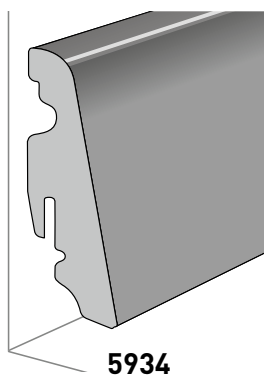
Elegance

## DECOR SKIRTING

- MDF Skirting with digital printed foil.
- 6 standard colours.
- For other colours, please contact us.
- Packaging: 5 x 2.4 lm strips.
- Installation with plastic clip or with adhesive.

### Benefits:

Skirting colourmatching Streamo Karavel designs.



0360 Deep Forest



0262 Elm



0357 Portobello



0265 Walnut



0258 Muir Oak



0448 Malua Bay

## TECHNICAL SUPPORT

Training, installation & cleaning guides available on request. Please contact us.

## KARAVEL AVAILABILITY

Part Number	Material	Colors	Design	Emboss	152 x 914	102 x 914	184 x 1219	457 x 457
299A0258	STREAMO KARAVEL	0258 Muir Oak*	Wood	Smooth	■			
299A0259	STREAMO KARAVEL	0259 Natural Oak	Wood	Smooth	■			
299A0262	STREAMO KARAVEL	0262 Elm	Wood	Smooth	■			
299A0265	STREAMO KARAVEL	0265 Walnut	Wood	Smooth	■			
299A0269	STREAMO KARAVEL	0269 Birch*	Wood	Smooth	■			
299A0324	STREAMO KARAVEL	0324 Silversands*	Wood	Smooth	■			
299A0339	STREAMO KARAVEL	0339 American Oak	Wood	Smooth	■			
299A0357	STREAMO KARAVEL	0357 Portobello	Wood	Rustic	■			
299A0360	STREAMO KARAVEL	0360 Deep Forest	Wood	Rustic	■			
299A0362	STREAMO KARAVEL	0362 Mystic River	Wood	Rustic	■			
299A0364	STREAMO KARAVEL	0364 Barnwood	Wood	Sawed	■			
299A0369	STREAMO KARAVEL	0369 Drift Wood	Wood	Sawed	■			
299A0533	STREAMO KARAVEL	0533 Baxter	Wood	Smooth	■			
299A0541	STREAMO KARAVEL	0541 Flamingo	Wood	Smooth	■			
299A0547	STREAMO KARAVEL	0547 Duchess*	Wood	Smooth	■			
299D0448	STREAMO KARAVEL	0448 Malua Bay	Wood	Rustic			■	
299D0455	STREAMO KARAVEL	0455 Long Board	Wood	Rustic			■	
299D0577	STREAMO KARAVEL	0577 Albion	Wood	Smooth			■	
299E0705	STREAMO KARAVEL	0705 Teak	Wood	Smooth		■		
299E0706	STREAMO KARAVEL	0706 Old Teak	Wood	Smooth		■		
299E0707	STREAMO KARAVEL	0707 White Teak	Wood	Smooth		■		
299C0475	STREAMO KARAVEL	0475 Bolero*	Mineral	Mineral				■
299C0512	STREAMO KARAVEL	0512 Lewis Town	Mineral	Mineral				■
299C0518	STREAMO KARAVEL	0518 Mugello	Mineral	Mineral				■
299C0528	STREAMO KARAVEL	0528 Flagstaff*	Mineral	Mineral				■

\*Production on order without minimum order quantity

## SUGGESTIONS STRIPS & PLANKS

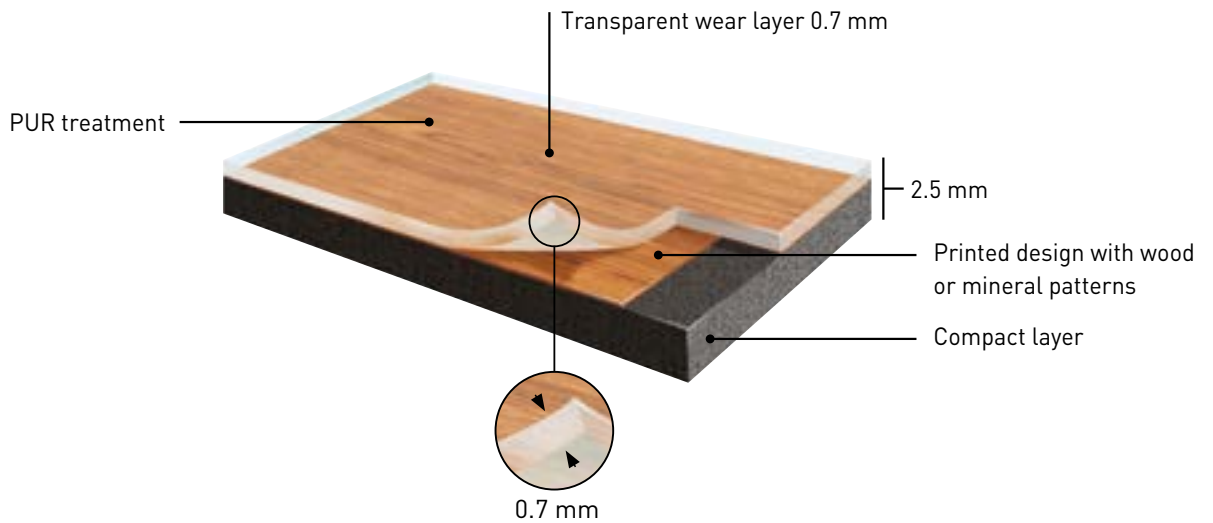
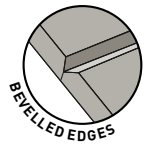
KARAVEL ▼	STRIPS ▶					
	0330 Silver	0331 Black	0332 Light Concrete	0333 Dark Concrete	0334 Brown Concrete	0335 White Concrete
0258 Muir oak	✓		✓			✓
0259 Natural Oak			✓			✓
0262 Elm			✓	✓	✓	
0265 Walnut	✓	✓				
0269 Birch					✓	✓
0324 Silversands	✓			✓		✓
0339 American Oak		✓		✓		
0357 Portobello		✓		✓	✓	
0360 Deep Forest				✓		✓
0362 Mystic River		✓				
0364 Barnwood		✓				✓
0369 Drift Wood				✓		✓
0448 Malua Bay			✓		✓	
0455 Long Board				✓	✓	✓
0533 Baxter					✓	✓
0541 Flamingo	✓	✓		✓		✓
0547 Duchess		✓		✓	✓	✓
0577 Albion		✓				✓
0705 Teak		✓		✓		✓
0706 Old Teak		✓		✓		✓
0707 White Teak			✓		✓	✓

## PACKAGING

Dimensions (mm)	Box (m <sup>2</sup> )	Tiles/Box	Box/Pallet	Weight/Box (kg)	Gross weight of a pallet (kg)
152 x 914	3.34	24	55	15.3	± 860
102 x 914	3.34	36	64	15.3	± 1000
184 x 1219	3.37	15	60	15.5	± 950
457 x 457	3.34	16	64	15.3	± 1000



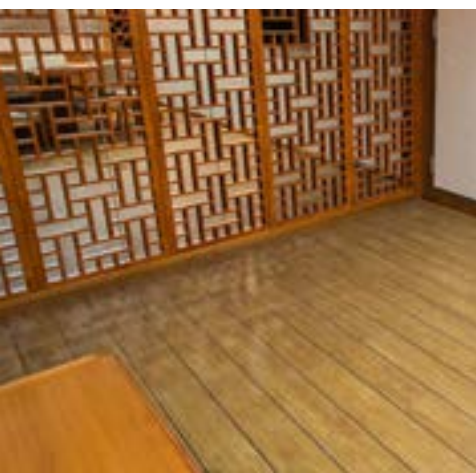
# DESCRIPTION



## The first IMO\* compliant flooring ever which combines stylish designs, safety and high traffic resistance

- Astonishing replication of natural wood and stone patterns
- Unique 0.7mm wear layer to offer the highest durability and strongest resistance to heavy traffic
- R10 slip resistance according to DIN 51 130 for an improved passengers safety
- PUR surface treatment for easy maintenance and maximum hygiene
- IMO compliant (part 2 and 5)
- Compliance with Modules B and D of the Marine Equipment Directive (MED)

*\*International Maritime Organisation*



# TECHNICAL DATA

			STREAMO KARAVEL
DESCRIPTION			
Total thickness	EN 428	mm	2.5
Thickness of the wearlayer	EN 429	mm	0.70
Weight	EN 430	g/m <sup>2</sup>	4200
Plank size	EN 427	cm	15.2 x 91.4 / 18.4 x 121.9 10.2 x 91.4 / 45.7 x 45.7
CLASSIFICATION			
Norm/product specification	-	-	EN 649
Fire rating	IMO Resolution	-	Part 5
		-	Part 2
	Maritime Approvals	-	Marine Equipment Directive
		-	US Coast Guard
		-	Transport Canada SOLAS 74
Static electrical propensity	EN 1815	kV	< 2
PERFORMANCE			
Wet Slip resistance	DIN 51130	class	R10
Wear resistance	EN 660.2	mm <sup>3</sup>	≤ 2
Wear group	EN 649	group	T
Type Binder content	ISO 10582	Type	I
Dimensional stability	EN 434	%	≤ 0.15
Residual indentation	EN 433	mm	≤ 0.1
Thermal conductivity	EN 12 524	W/(m.K)	0.25
Colour fastness	EN 20 105 - B02	degree	≥ 6
Chemical resistance	EN 423	-	OK
Surface treatment	-	-	PUR



Notified Body  
n° 1121



ClassNK





[www.trans-asiatic.com](http://www.trans-asiatic.com)



**t4** **Trans - Asiatic**  
Trading Pte Ltd

[www.trans-asiatic.com](http://www.trans-asiatic.com)  
[trasia@singnet.com.sg](mailto:trasia@singnet.com.sg)

Phone : +65 6282 5376  
Fax : +65 6284 6063

**Gerflor**  
theflooringgroup